



Antwis Collaborative
Empowering school leaders



Empowering Leaders - a new ONLINE course

Welcome



Nicki Antwis
Director



Antwis Collaborative
Empowering school leaders



Simon Antwis
Director

Let's get to know you!

- In the chat function
- Your name, your school, your role



Course Overview

- Designed for middle and senior leaders in Welsh independent schools
- Six interactive modules focused on core leadership domains
- Three group coaching sessions
- Practical, research-informed, and relevant to today's challenges



The graphic is a vertical poster for the course. At the top, it features the logos for Antwis Collaborative and the Welsh Independent Schools Council. The main title is 'EMPOWERING SCHOOL LEADERS' in large, bold, blue letters, with 'Online Training' underneath in a smaller, white font. Below this, there is a call to action: 'Join our school leader training for Headteachers, Deputy Headteachers, senior leaders and aspiring leaders.' To the right of this text is a circular image showing silhouettes of people standing on a hill against a sunset. Below the call to action is a section titled 'What You'll Learn:' with a list of five bullet points. At the bottom of the graphic, there is a dark green bar containing a phone icon and the number '07793817378', and a globe icon with the website 'www.antwiscollaborative.co.uk'. On the left side of the graphic, there are two small images: one of a wooden signpost pointing right with the word 'LEADERSHIP' on it, and another of a tree growing out of a pile of stones.

  WELSH INDEPENDENT
SCHOOLS COUNCIL

EMPOWERING SCHOOL LEADERS

Online Training

Join our school leader training for Headteachers, Deputy Headteachers, senior leaders and aspiring leaders.

What You'll Learn:

- Establishing vision, values and culture
- Curriculum and assessment
- Teaching and learning
- Behaviour and inclusion
- Leadership and management
- Professional learning and coaching

 07793817378  www.antwiscollaborative.co.uk

Target Audience

This course is designed for:

- Headteachers
- Deputy Headteachers
- Senior Leaders
- Middle Leaders

  WELSH INDEPENDENT SCHOOLS COUNCIL

EMPOWERING SCHOOL LEADERS

Online Training

Join our school leader training for Headteachers, Deputy Headteachers, senior leaders and aspiring leaders.

What You'll Learn:

- Establishing vision, values and culture
- Curriculum and assessment
- Teaching and learning
- Behaviour and inclusion
- Leadership and management
- Professional learning and coaching

 07793817378  www.antwiscollaborative.co.uk

Delivery Format

- Online delivery (Zoom)
- x 6 2-hour sessions: 4.00pm-6.00pm
- Workshop packs
- x 3 Group coaching sessions

- **Starting October 2025**



The poster features the Antwis Collaborative logo (a stylized tree) and the Welsh Independent Schools Council logo (a green square with a white '9' and a red arrow). The title 'EMPOWERING SCHOOL LEADERS' is in large, bold, blue letters, with 'Online Training' below it in a smaller, white font. A central image shows silhouettes of three people standing on a hill against a sunset. To the right, a dark blue box contains the text 'Join our school leader training for Headteachers, Deputy Headteachers, senior leaders and aspiring leaders.' Below this, another dark blue box titled 'What You'll Learn:' lists five bullet points: 'Establishing vision, values and culture', 'Curriculum and assessment', 'Teaching and learning', 'Behaviour and inclusion', and 'Leadership and management'. A small image of a tree growing from stones is next to the list. At the bottom, contact information is provided: a phone icon with the number '07793817378' and a globe icon with the website 'www.antwiscollaborative.co.uk'.

  WELSH INDEPENDENT
SCHOOLS COUNCIL

EMPOWERING SCHOOL LEADERS

Online Training

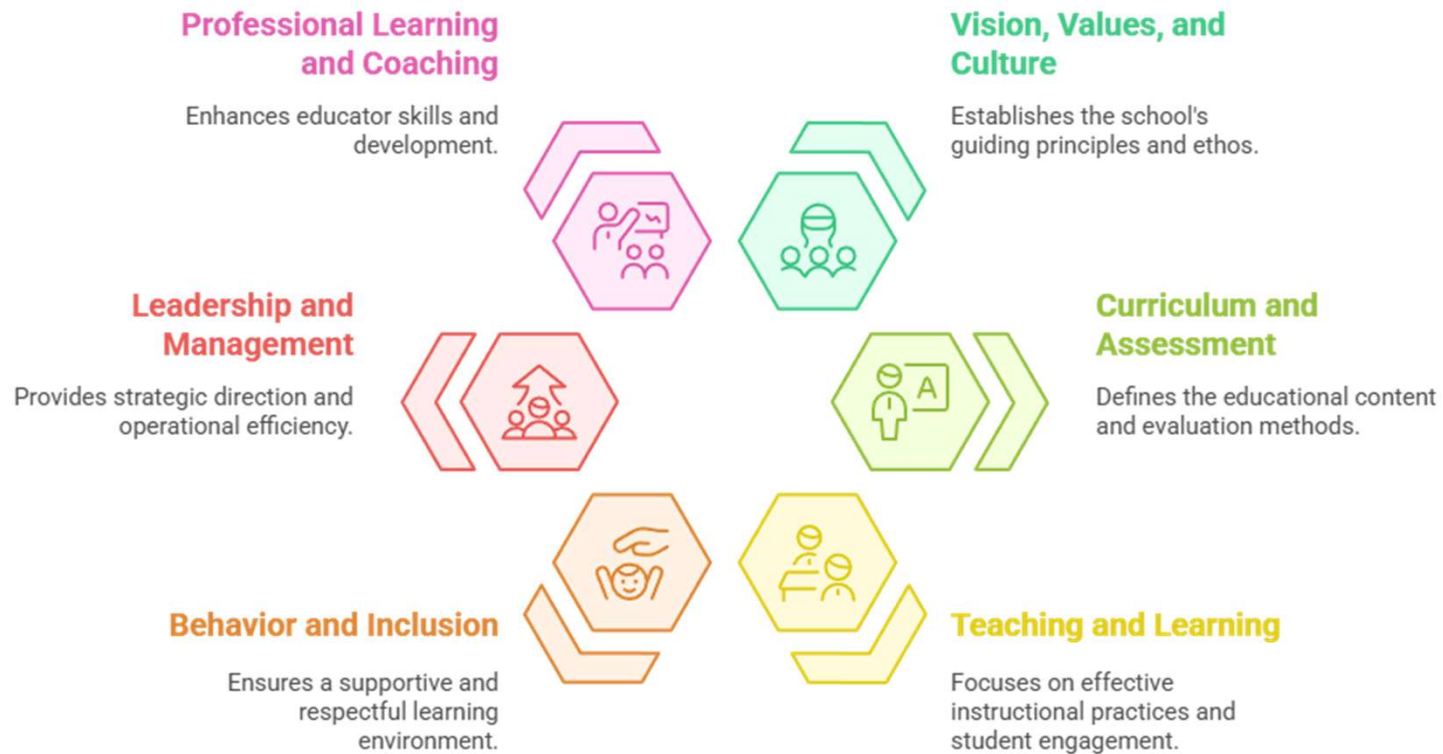
Join our school leader training for Headteachers, Deputy Headteachers, senior leaders and aspiring leaders.

What You'll Learn:

- Establishing vision, values and culture
- Curriculum and assessment
- Teaching and learning
- Behaviour and inclusion
- Leadership and management
- Professional learning and coaching

 07793817378  www.antwiscollaborative.co.uk

Modules – an overview



Johari Window



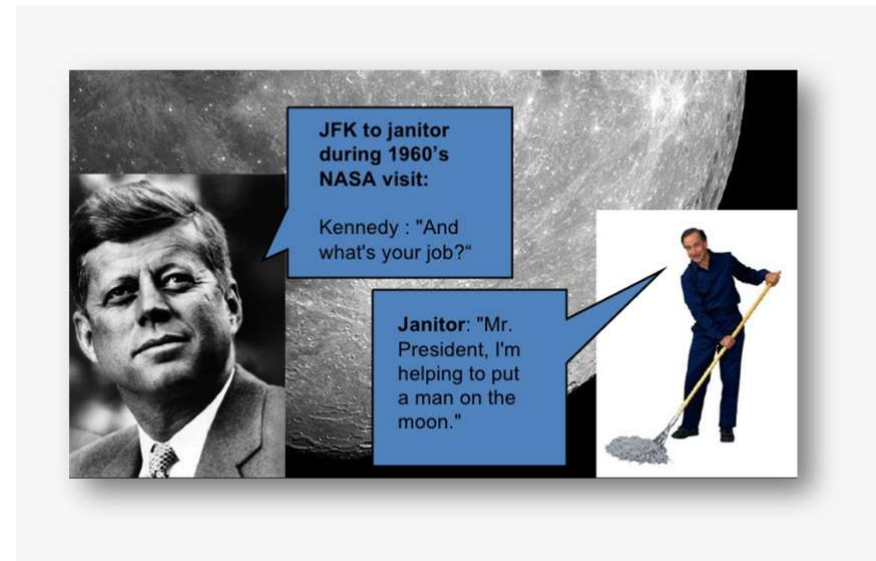
In the chat function:

From the six modules, which do you feel you are consciously competent or unconsciously incompetent?

Eg
CC=.....
UI=.....

Module 1 – Vision, Values & Culture

- Clarifying school vision and strategic priorities
- Creating and sustaining a positive school culture
- Aligning values with leadership practice



Module 2 – Curriculum & Assessment

- Designing purposeful and balanced curricula
- Leading assessment for impact
- Navigating innovation and accountability



Module 3 – Teaching & Learning

- Promoting excellent pedagogy
- Using evidence to improve outcomes
- Building a professional culture of learning

DATA



SORTED



ARRANGED



PRESENTED VISUALLY



EXPLAINED WITH A STORY

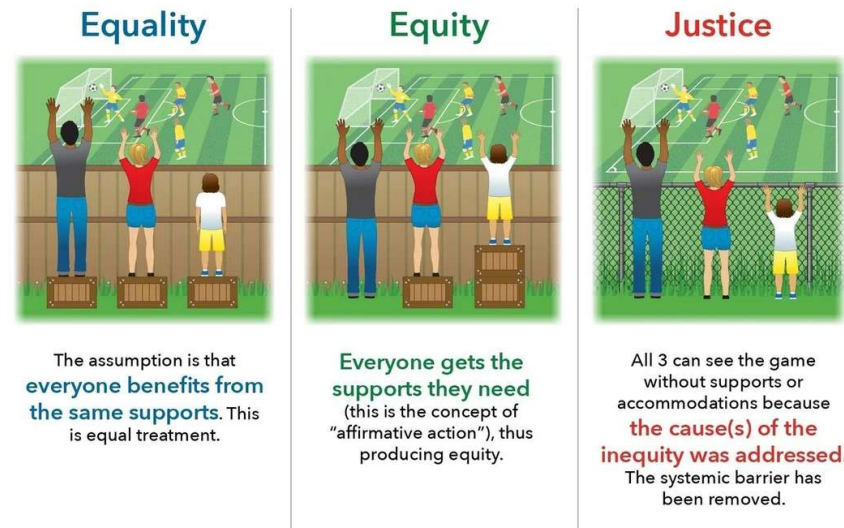


ACTIONABLE (USEFUL)



Module 4 – Behaviour & Inclusion

- Inclusive leadership for all learners
- Leading behaviour with clarity and compassion
- Supporting mental health and wellbeing



Module 5 – Leadership & Management

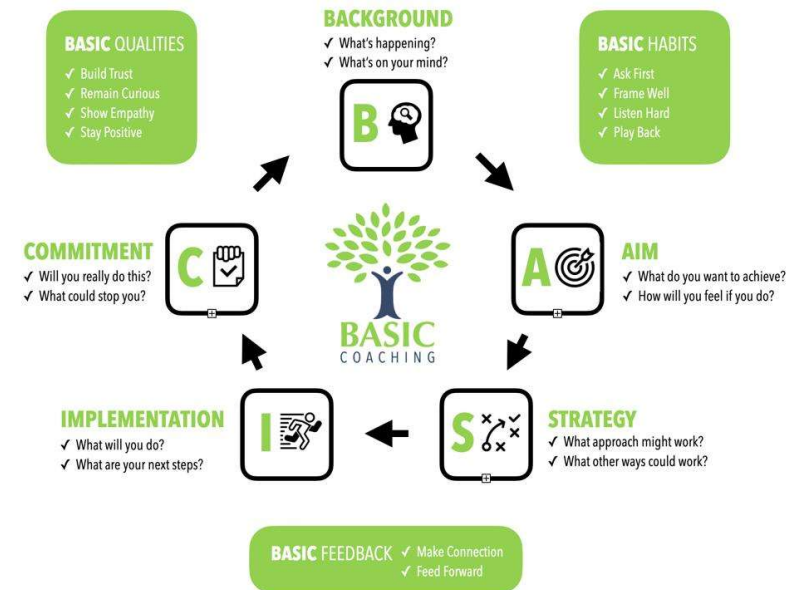
- Effective strategic planning and delegation
- Building high-performing teams
- Leading through change and uncertainty

Model for Managing Complex Change



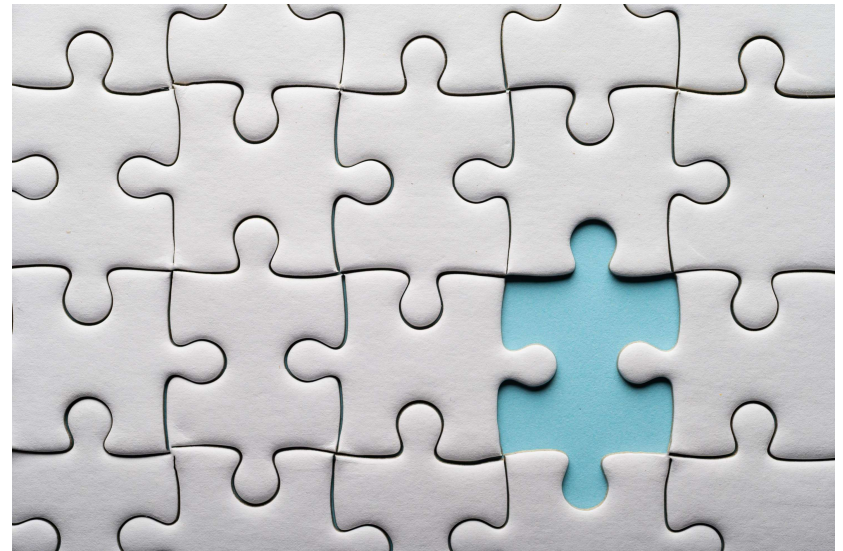
Module 6 – Professional Learning & Coaching

- Embedding continuous professional development
- Coaching as a tool for leadership and team growth
- Enhancing staff wellbeing and retention



Is there anything missing?

- In the chat function
- Is there anything you would like to be included in the six modules?



Next steps

- **Cost £450**
- Register using QR code by 31st August to receive 10% discount
- Registration open until 26th September
- Date also extended to WISC Conference in October
- Minimum of 12 (no maximum)
- We will email dates/times/zoom links



Thank you

Email:

nicki.antwis@antwiscollaborative.co.uk

simon.antwis@antwiscollaborative.co.uk

Website:

<https://www.antwiscollaborative.co.uk>

Phone

07793 817378



Any questions?

WISC Empowering Leaders Course
registration form

